

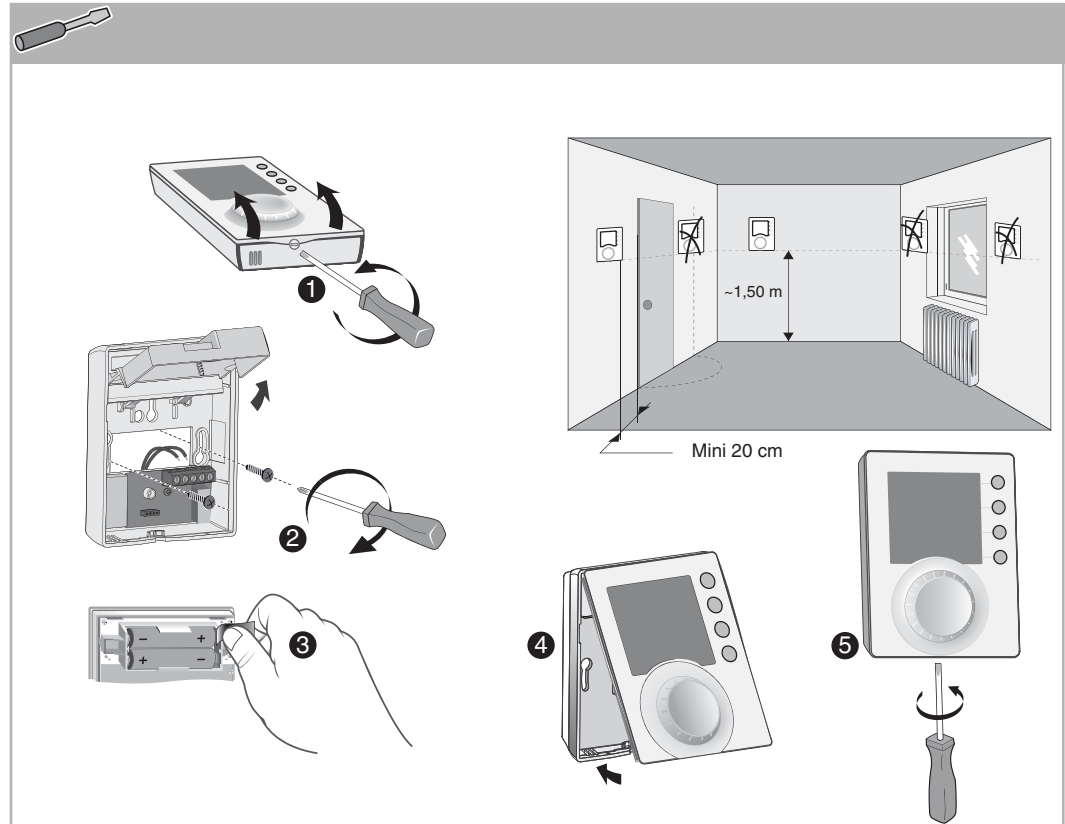
TYBOX 417



www.deltadore.com

Important product information (4)

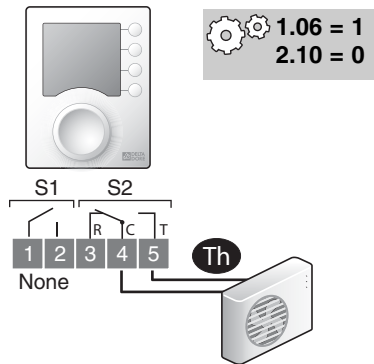
	2 x 1,5V LR03 - AAA Alkaline
Class	
S1	2 A max., 230V~ (Type 1.C)
S2	
°C	-5°C / +40°C
	80 x 103 x 25 mm
IP	IP 30
CE	2004/108/CE - 2006/95/CE



1

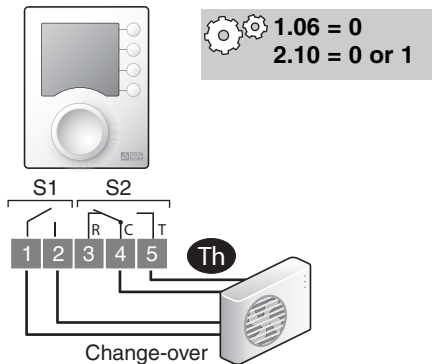
S1 = None
S2 = Th

Th Entrée thermostat / Thermostat input /
Entrada do termostato / Entrada do termostato /
Ingresso termostato / Thermostat-eingang /
Wejście dla termostatu / Thermostaatingang /
Termostat vstupní / Termostat ingång /
Termostat input / Termostat ingång /
Termostaatti tulo / 温控器输入



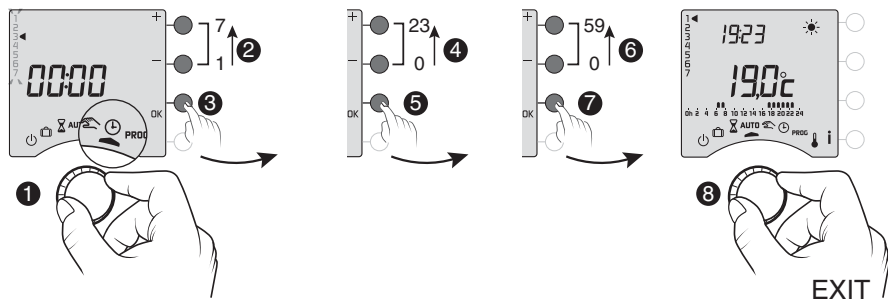
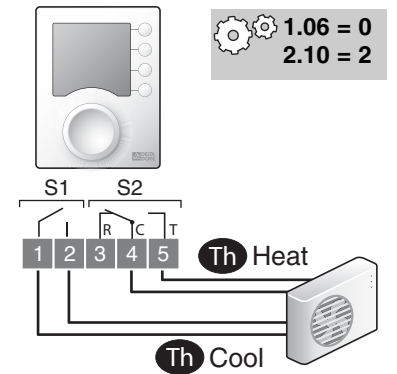
2

S1 = Change-over
S2 = Th



3

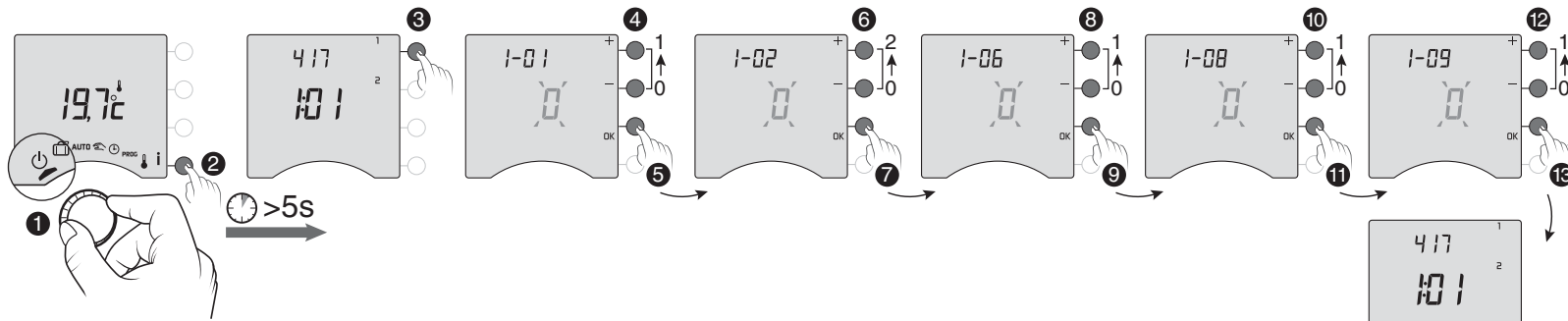
S1 = Th Cool
S2 = Th Heat





MENU 1

1-01	PROG 7 / PROG 1
1-02	Prog 60', 30', 15' Oh 2
1-06	HEAT / HEAT-COOL
1-08	Confort régulé par TYBOX / Comfort regulated by TYBOX / Confort regulado por TYBOX / Modo Conforto regulado por TYBOX / Confort regulato mediante TYBOX / Komforteinstellung über den TYBOX / Regulacja komfortu przez TYBOX / Comfort geregeld door TYBOX / Komfort regulovaný TYBOX / Komfort reglerad av TYBOX / Komfort reguleret af TYBOX / Komfort regulert av TYBOX / Lämpötilan sää-tely TYBOXilla / 通过TYBOX调节的舒适状态
1-09	Anti-grippage / Anti-seizing / Antigripado / Antigripagem/ Antigrippaggio/ Festlaufschutz / System zapobiegający blokowaniu się pompy/ Antiblokkering / Proti začření / Anti-friktion/ Anti-rivning/ Antiblokkering/ Kiertovesipumpun kiinnijuuuttumisen esto/ 防卡



1-01	0	PROG 7
	1	PROG 1

1-06	0	HEAT-COOL
	1	HEAT

1-02	0	60 min.
	1	30 min.
	2	15 min.

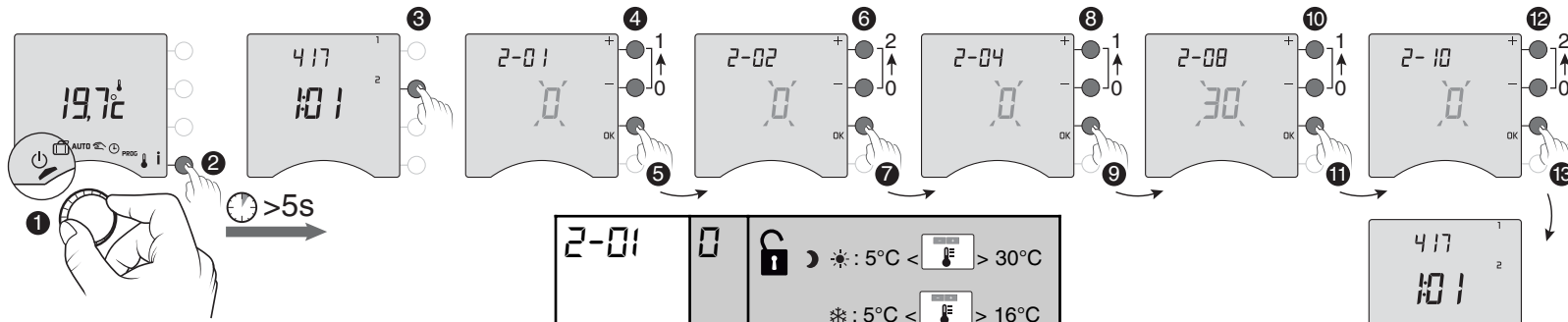
1-08	0	Yes
	1	No

1-09	0	No
	1	Yes



MENU 2

2-01	Limitation consignes / Settings limitation / Limitación consignas / Limitação de recomendações / Limitazione valori di riferimento / Begrenzung der Sollwerte / Ograniczenie wartości zadane / Beperking ingestelde temperatuur / Omezení - pokyny / Anvisningsbegränsningar / Begrænsning indstillingsværdier / Begrensning i instruksene / Ohjearvojen rajoitus / 温度设定限制
2-02	Correction température mesurée / Measured temperature correction / Corrección temperatura medida / Correção da temperatura medida / Correzione temperatura misurata / Korrektur der gemessenen Temperatur / Korekta zmierzonej temperatury / Aanpassen gemeten temperatuur / Korekce měřené teploty / Uppmätt temperaturkorrigering / Korrektur målt temperatur / Korreksjon av målt temperatur / Mitatun lämpötilan korjaus / 测量出的温度的校正
2-04	Affichage mode AUTO / AUTO mode display / Visualización modo AUTO / Visualização em modo AUTO / Visualizzazione modalità Auto / Anzeige AUTO-Modus / Wyświetlanie tryb AUTO / Weergave AUTO-modus / Zobrazení režimu AUTO / Visning av AUTO-läge / Visning AUTO funktion / Display for AUTO-modus / AUTO-tilan näyttö / 自动模式显示



2-08	Base de temps de régulation / Regulation time base / Base de tiempos de regulación / Base de tempo de regulação / Base di tempo di regolazione / Zeitbasis für die Einstellung / Podstawa czasu regulacji / Basis voor instellingstijd / Báze doby regulace / Bas för inställningstid / Tidsbasis for regulering / Tidsenhet for regulering / Lämpönsäätelyn aikayksikkö / 调节时基
------	---

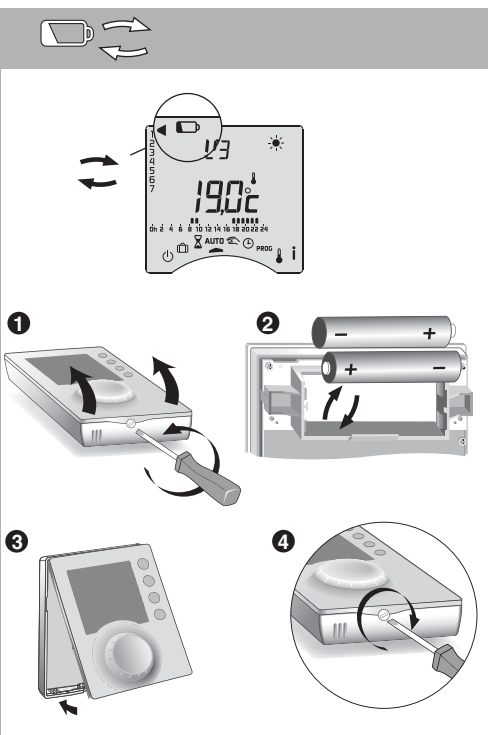
2-01	0	🔒 ☀️ : 5°C < > 30°C ☁️ : 5°C < > 16°C
	1	🔒 16°C < ☀️ Heat > 22°C 13°C < 🌙 Heat > 19°C 21°C < ☀️ Cool > 27°C 24°C < 🌙 Cool > 30°C
	1	🔒 PROG

2-02	- 5°C < > +5°C
------	-----------------

2-04	0	
	1	

2-08	30	Minutes
	45	Minutes
	60	Minutes

2-10	0	<ul style="list-style-type: none"> • S1 (Change-over) — = Heat ; — = Cool • S2 (Th)
	1	<ul style="list-style-type: none"> • S1 (Change-over) — = Cool ; — = Heat • S2 (Th)
	2	<ul style="list-style-type: none"> • S1 (Th Cool) • S2 (Th Heat)



RESET

