

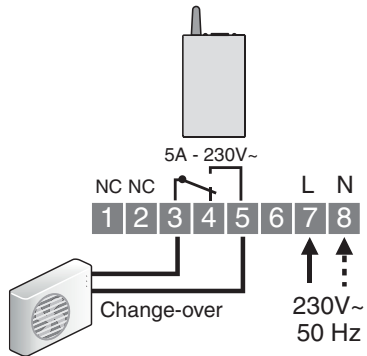
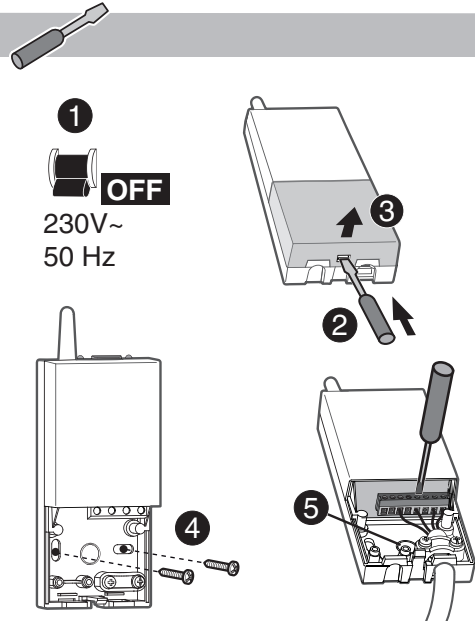


RF 6500

www.deltadore.com

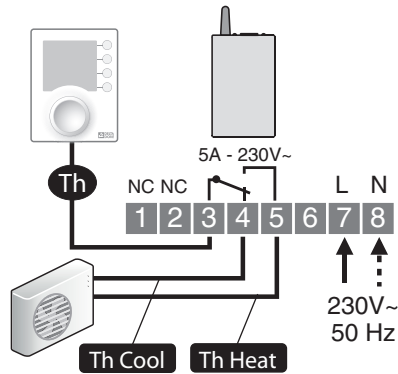
Important product information (24)

	230 V~, 50 Hz 2,6 VA
	16 max.
°C	-5°C / +40°C
	54 x 140 x 25 mm
	5 A max., 230V~



Th

Entrée thermostat / Thermostat input /
Entrada termostato / Entrada do termostato /
Ingresso termostato / Thermostat-eingang /
Wejście dla termostatu / Thermostaatingang /



Termostat vstupní / Termostat ingång /
Termostat input / Termostat inngang /
Termostaatti tulo / 温控器输入

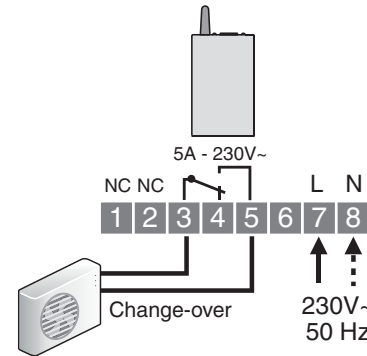
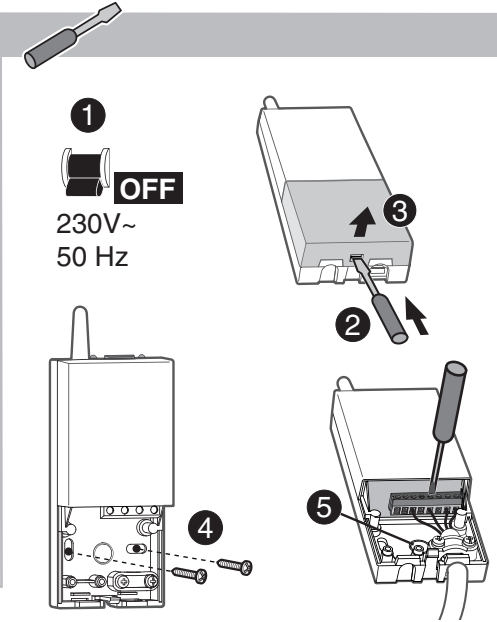


RF 6500

www.deltadore.com

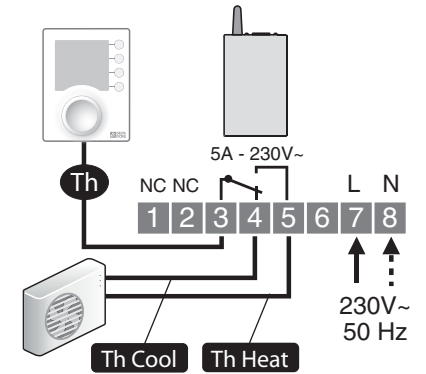
Important product information (24)

	230 V~, 50 Hz 2,6 VA
	16 max.
°C	-5°C / +40°C
	54 x 140 x 25 mm
	5 A max., 230V~

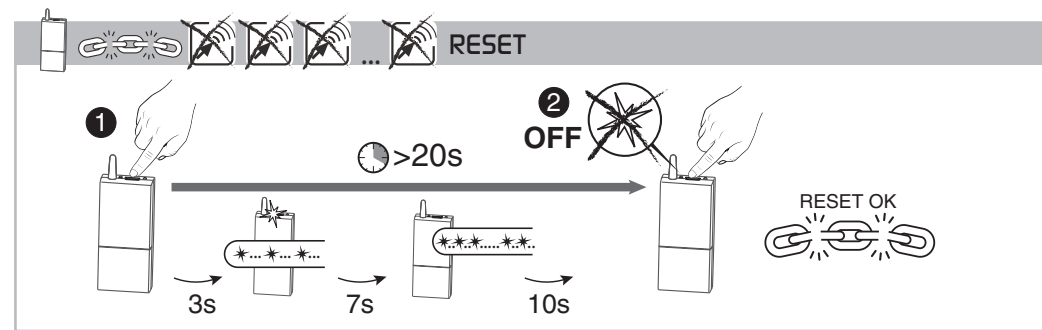
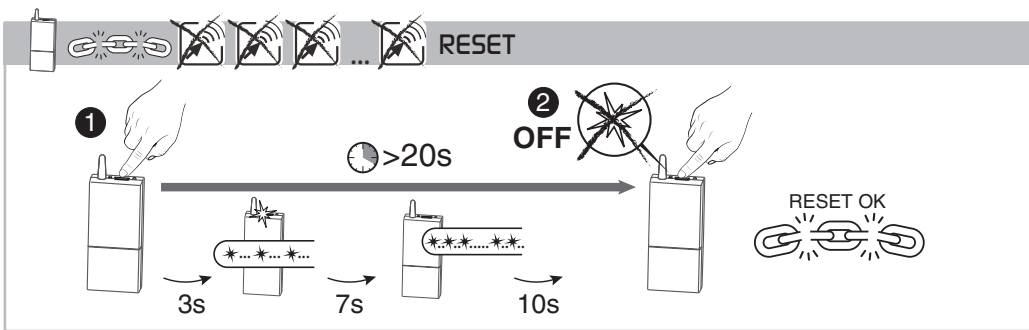
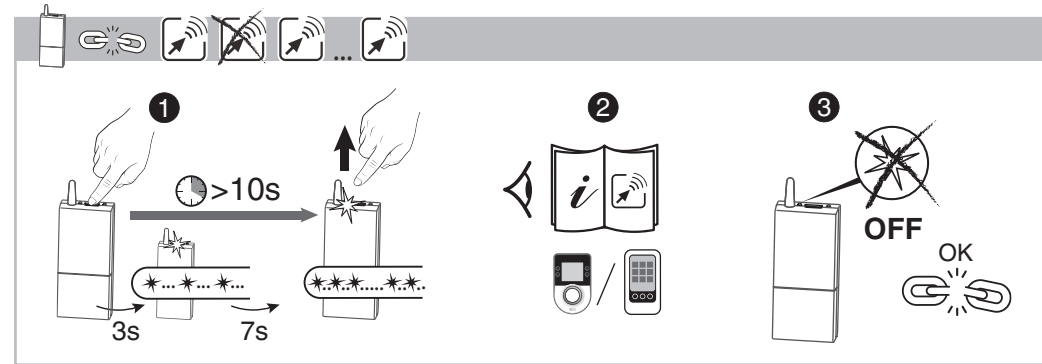
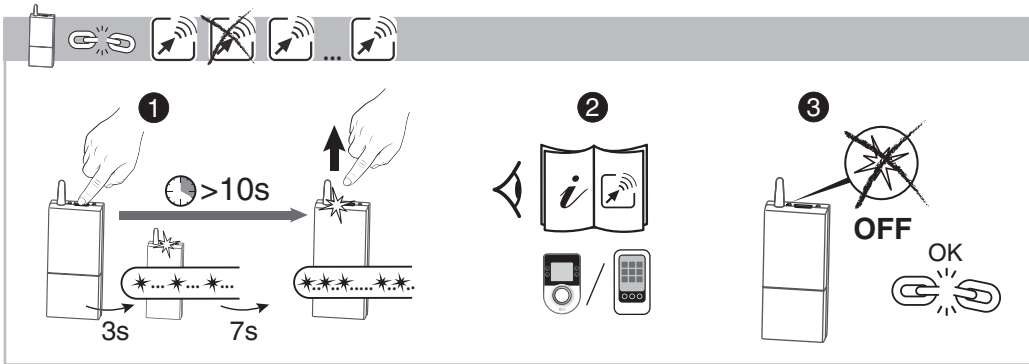
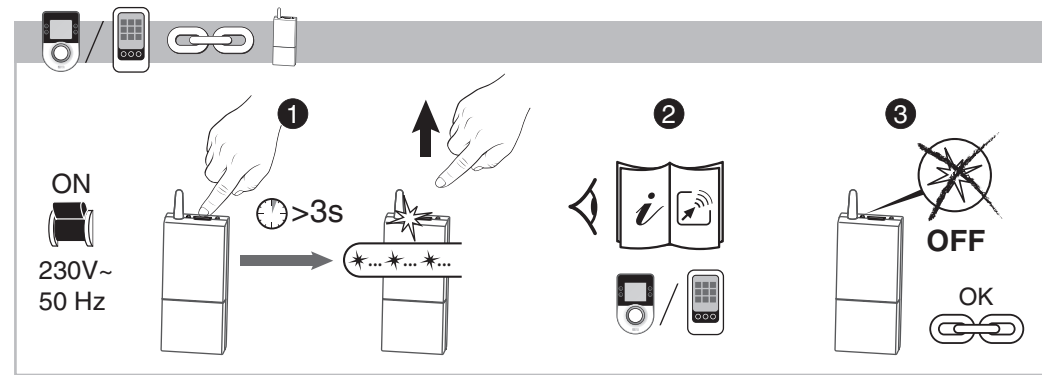
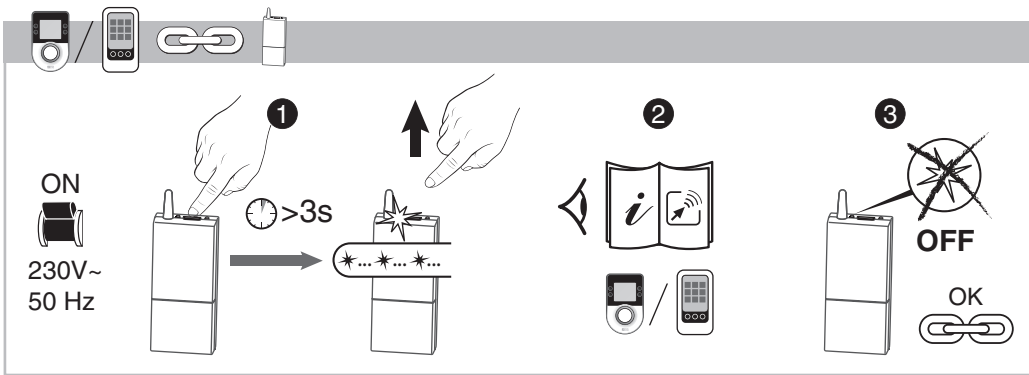







Th




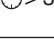
Entrée thermostat / Thermostat input /
Entrada termostato / Entrada do termostato /
Ingresso termostato / Thermostat-eingang /
Wejście dla termostatu / Thermostaatingang /












Termostat vstupní / Termostat ingång /
Termostat input / Termostat inngang /
Termostaatti tulo / 温控器输入



-  Récepteur / Receiver / Receptor / Receptor / Ricevitore / Empfänger / Odbornik / Ontvanger / Prijímač / Mottagare / Modtager / Mottaker / Vastaanotin / 接收器 /
-  Émetteur / Transmitter / Emisor / Emissor / Emittitore / Sender / Nadajnik / Zender / Vyslač / Sändare / Transmitter / Sender / Lähetin / 发射器 /
-  Association / Association / Asociación / Associação / Associazione / Verbindung / Przystąpienie / Verbinding / Přifazení / Associering / Tilknynning / Forbindelse / Kytentä / 连接 /
-  Suppression d'une association / Delete one association / Borrara asociación / Eliminar associação / Eliminare le associazioni / Verbindung löschen / Usunięcie przypisania / Een verbinding opheffen / Zrušit přifazení / Ta bort associationerna / Sletning af en tilknynning / Slette en Forbindelse / Poista kytentä / 删除一个连接 /
-  Reset total / Total reset / Reset total / Reincialização total / Reset totale / Reset / Reset całkowity / Totale reset / Celkový reset / Total återställning / Total nulstilling / Total nullstilling / Nollaa kaikki / 完全初始设置 /

-  Clignotement lent / Slow flashing / Parpadeo lento / Intermitência lenta / Lampeggiamento lento / Langsames blinken / Wolne miganie / Langzaam knipperen / Pomalé blikání / Blinking långsamt / Langsomme blink / Hidas vilkunta / 缓慢的闪烁 /
-  Clignotement rapide / Fast flashing / Parpadeo rápido / Intermitência rápida / Lampeggiamento rapido / Schnelles blinken / Szybkie miganie / Snel knipperen / Rychlé blikání / Snabb blinkningar / Hurtige blink / Raske blink / Nopea vilkunta / 快速的闪烁 /
-  Temps d'appui / Press time / Tiempo de pulsación / Tempo de pressão / Tempo pressione / Tastendruckdauer / Czas naciskania / Druktij / Doba stisknutí / Kopplingstid / Tid Nedtrykning / Trykkesid / Painallisaika / 按键时间 /
-  Voyant éteint / LED off / Testigo apagado / Indicador apagado / Spia spenta / Kontrollleuchte aus / Lamka gaśnie / Controllelampe uit / LED nesvítí / Lampan släcks / Kontrolllampe slukket / Lysdiode slukket / Merkkivalo palaa / 指示灯熄灭 /

-  Récepteur / Receiver / Receptor / Receptor / Ricevitore / Empfänger / Odbornik / Ontvanger / Prijímač / Mottagare / Modtager / Mottaker / Vastaanotin / 接收器 /
-  Émetteur / Transmitter / Emisor / Emissor / Emittitore / Sender / Nadajnik / Zender / Vyslač / Sändare / Transmitter / Sender / Lähetin / 发射器 /
-  Association / Association / Asociación / Associação / Associazione / Verbindung / Przystąpienie / Verbinding / Přifazení / Associering / Tilknynning / Forbindelse / Kytentä / 连接 /
-  Suppression d'une association / Delete one association / Borrara asociación / Eliminar associação / Eliminare le associazioni / Verbindung löschen / Usunięcie przypisania / Een verbinding opheffen / Zrušit přifazení / Ta bort associationerna / Sletning af en tilknynning / Slette en Forbindelse / Poista kytentä / 删除一个连接 /
-  Reset total / Total reset / Reset total / Reincialização total / Reset totale / Reset / Reset całkowity / Totale reset / Celkový reset / Total återställning / Total nulstilling / Total nullstilling / Nollaa kaikki / 完全初始设置 /

-  Clignotement lent / Slow flashing / Parpadeo lento / Intermitência lenta / Lampeggiamento lento / Langsames blinken / Wolne miganie / Langzaam knipperen / Pomalé blikání / Blinking långsamt / Langsomme blink / Hidas vilkunta / 缓慢的闪烁 /
-  Clignotement rapide / Fast flashing / Parpadeo rápido / Intermitência rápida / Lampeggiamento rapido / Schnelles blinken / Szybkie miganie / Snel knipperen / Rychlé blikání / Snabb blinkningar / Hurtige blink / Raske blink / Nopea vilkunta / 快速的闪烁 /
-  Temps d'appui / Press time / Tiempo de pulsación / Tempo de pressão / Tempo pressione / Tastendruckdauer / Czas naciskania / Druktij / Doba stisknutí / Kopplingstid / Tid Nedtrykning / Trykkesid / Painallisaika / 按键时间 /
-  Voyant éteint / LED off / Testigo apagado / Indicador apagado / Spia spenta / Kontrollleuchte aus / Lamka gaśnie / Controllelampe uit / LED nesvítí / Lampan släcks / Kontrolllampe slukket / Lysdiode slukket / Merkkivalo palaa / 指示灯熄灭 /